

STARK 3810 T Brushcutter



Documents

Engine

Ignition system

Tank and air filter

Transmission

Carburettor WT-1099

Accessories

Illustrated part list (Head "Load & Go" D.130)

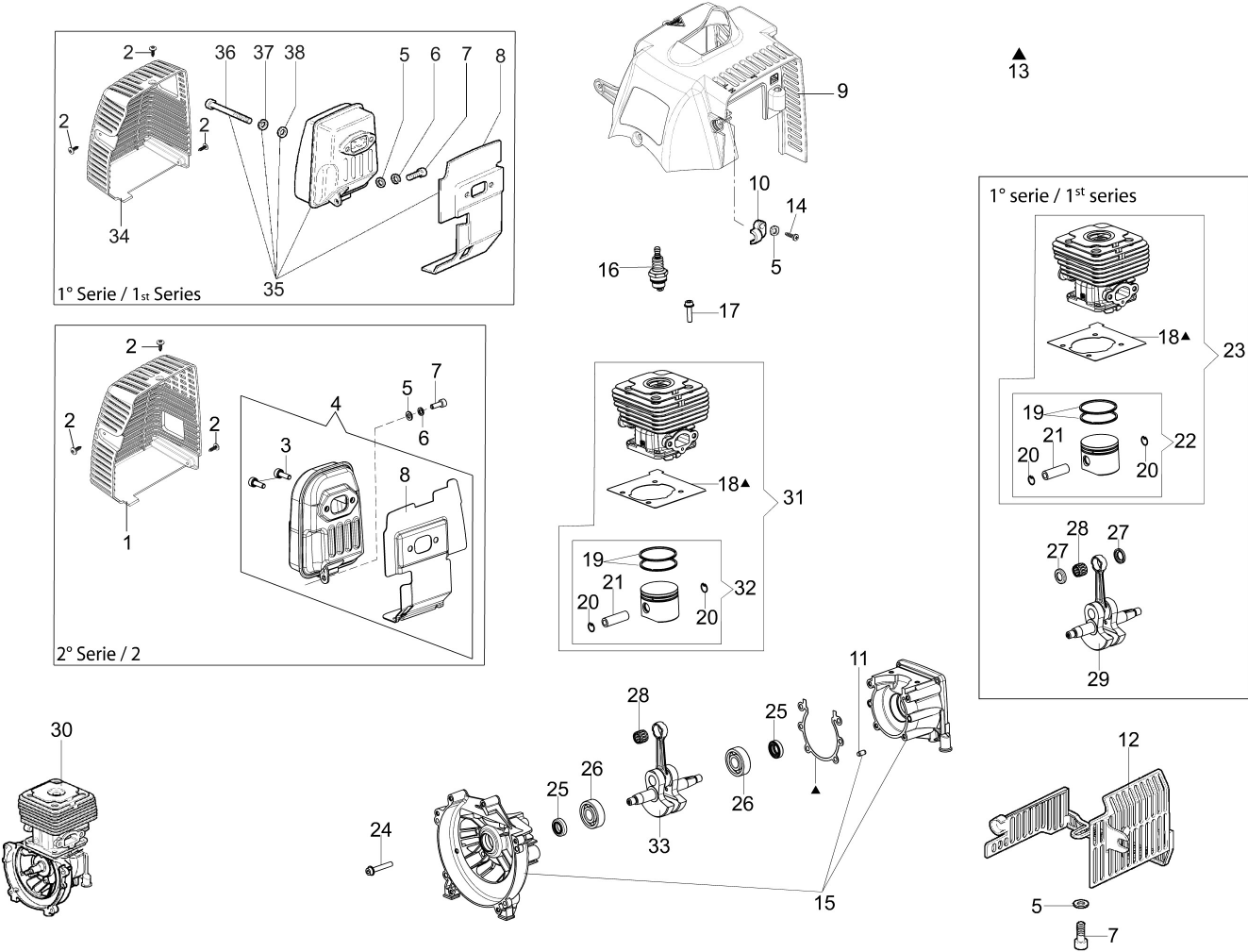


Illustration Engine

| Ref.Nu | Qty | Part number | Description | Validity from | Validity till | Notes | Bulletin |
|--------|-----|-------------|-----------------------------|---------------|---------------|-------|---------------|
| 1 | 1 | 61330168R | Muffler cover | | | | |
| 2 | 3 | 3960121R | Screw | | | | |
| 3 | 2 | 005100906AR | Screw | | | | |
| 4 | 1 | 61330192CR | Complete muffler | | | | |
| 5 | 3 | 3916005R | Washer | | | | |
| 6 | 1 | 3819006R | Washer | | | | |
| 7 | 3 | 3801010R | Screw | | | | |
| 8 | 1 | 61330125R | Deflector | | | | |
| 9 | 1 | 61330127AR | Cylinder cover | | | | |
| 10 | 1 | 61200064R | Stopper | | | | |
| 11 | 4 | 3023008R | Plug | | | | |
| 12 | 1 | 61330054BR | Guard | | | | |
| 13 | 1 | 61202038BR | Gasket set | | | | |
| 14 | 1 | 3960069AR | Screw | | | | |
| 15 | 1 | 61330067 | Crankcase assy | | | | |
| 16 | 1 | 3055115R | Spark plug | | | | |
| 17 | 4 | 094000101R | Screw | | | | |
| 18 | 1 | 61350272R | Gasket | | | | |
| 19 | 2 | 4196166R | Piston ring | | | | |
| 20 | 2 | 004900061R | Ring | | | | |
| 21 | 1 | 50110047R | Piston pin | | | | |
| 22 | 1 | 50110066A | Piston assy | | SN 8608113965 | | BT3-138-05/18 |
| 23 | 1 | 61212005B | Complete cylinder Ø38 | | | | BT3-138-05/18 |
| 24 | 4 | 3860096R | Screw | | | | |
| 25 | 2 | 094000099R | Seal ring | | | | |
| 26 | 2 | 094000006R | Bearing | | | | |
| 27 | 2 | 50110043AR | Spacer | | SN 8608113965 | | BT3-138-05/18 |
| 28 | 1 | 50110044R | Bearing | | | | |
| 29 | 1 | 61200001R | Crankshaft | | SN 8608113965 | | BT3-138-05/18 |
| 30 | 1 | 61330241R | Short block | | | | |
| 31 | 1 | 61210137 | Complete cylinder | SN 8608113966 | | | BT3-138-05/18 |
| 32 | 1 | 61210136 | Piston assy Ø38 | SN 8608113966 | | | BT3-138-05/18 |
| 33 | 1 | 61330226R | Crankshaft | SN 8608113966 | | | BT3-138-05/18 |
| 34 | 1 | 61330119R | Muffler cover | | | | |
| 35 | 1 | 61330126R | Complete muffler KAT EURO 2 | | | | |
| 36 | 2 | 3801065R | Screw | | | | |
| 38 | 2 | 3819036R | Washer | | | | |
| 38 | 2 | 3916006R | Washer | | | | |

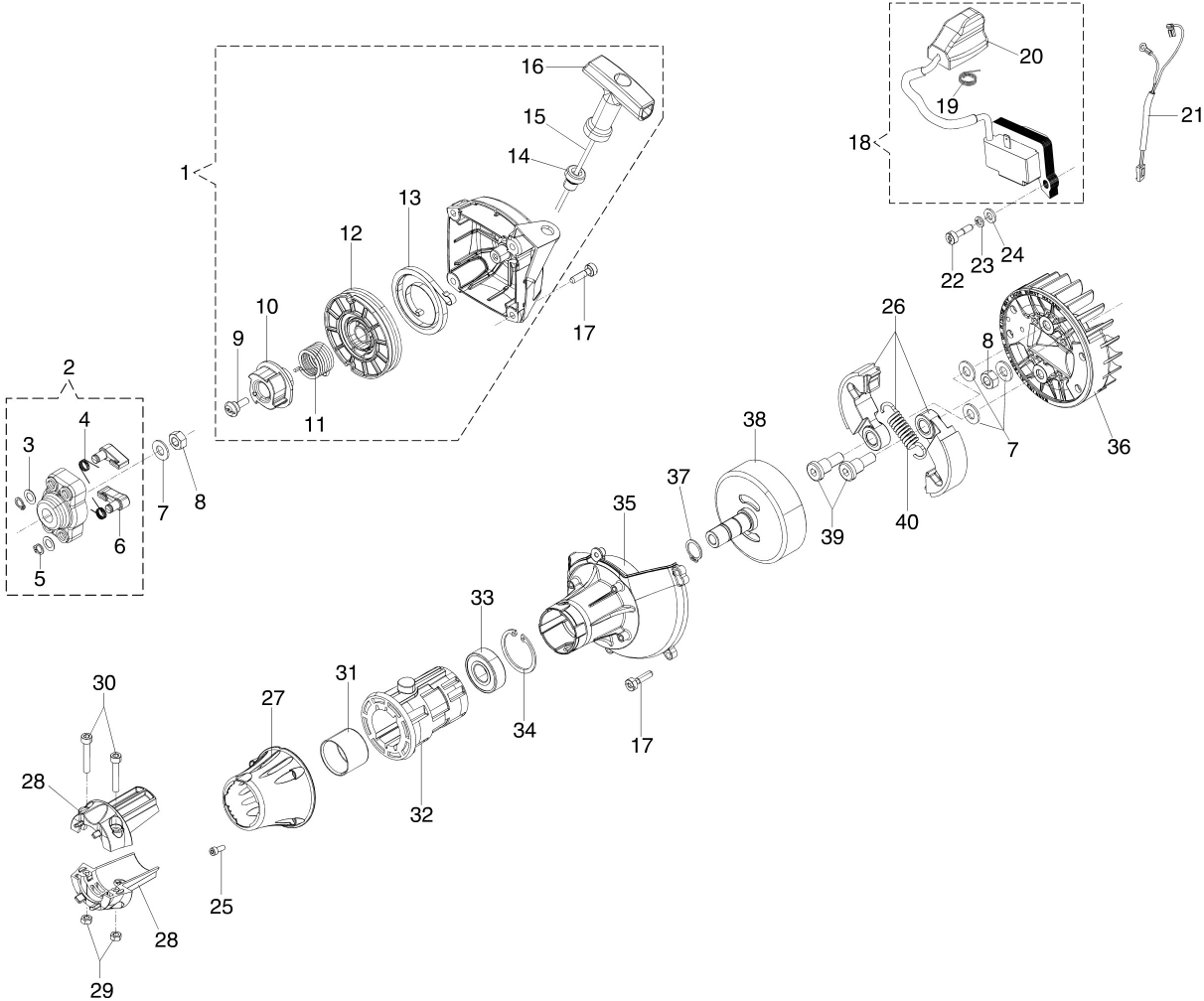


Illustration Ignition system

| Ref.Nu | Qty | Part number | Description | Validity from | Validity till | Notes | Bulletin |
|--------|-----|-------------|----------------|---------------|---------------|-------|----------|
| 1 | 1 | 61332015R | Starter assy | | | | |
| 2 | 1 | 61330197 | Clutch driver | | | | |
| 3 | 2 | 3064010R | Washer | | | | |
| 4 | 2 | 4191017AR | Spring | | | | |
| 5 | 2 | 3024007R | Ring | | | | |
| 6 | 2 | 61350145R | Pawl | | | | |
| 7 | 1 | 3818011AR | Washer | | | | |
| 8 | 1 | 3912009 | Nut | | | | |
| 9 | 1 | 50160024 | Screw | | | | |
| 10 | 1 | 61350204AR | Sprocket | | | | |
| 11 | 1 | 61350203BR | Spring | | | | |
| 12 | 1 | 61350139R | Starter pulley | | | | |
| 13 | 1 | 004000132R | Spring | | | | |
| 14 | 1 | 072700089R | Bushing | | | | |
| 15 | 1 | 4098073R | Starter rope | | | | |
| 16 | 1 | 61200015R | Starter handle | | | | |
| 17 | 9 | 3801010R | Screw | | | | |
| 18 | 1 | 61250015CR | Ignition coil | | | | |
| 19 | 1 | 50050127 | Spring | | | | |
| 20 | 1 | 61200012AR | Spark plug cap | | | | |
| 21 | 1 | 61250282AR | Cable | | | | |
| 22 | 1 | 3901082R | Screw | | | | |
| 23 | 1 | 3819006R | Washer | | | | |
| 24 | 1 | 3916006R | Washer | | | | |
| 25 | 4 | 3893060R | Screw | | | | |
| 26 | 1 | 4191153BR | Clutch | | | | |
| 27 | 1 | 61200296R | Cover | | | | |
| 28 | 2 | 61200192AR | Adaptor | | | | |
| 29 | 2 | 3914003R | Nut | | | | |
| 30 | 2 | 3801015R | Screw | | | | |
| 31 | 1 | 4196038R | Bushing | | | | |
| 32 | 1 | 4196037R | Sleeve | | | | |
| 33 | 1 | 3035042R | Bearing | | | | |
| 34 | 1 | 3025022R | Seeger | | | | |
| 35 | 1 | 61200298R | Starter case | | | | |
| 36 | 1 | 61250014AR | Flywheel | | | | |
| 37 | 1 | 3024015R | Ring | | | | |
| 38 | 1 | 4191030R | Clutch drum | | | | |
| 39 | 2 | 4191027FR | Pin | | | | |
| 40 | 1 | 4191028R | Spring | | | | |

Illustration Tank and air filter

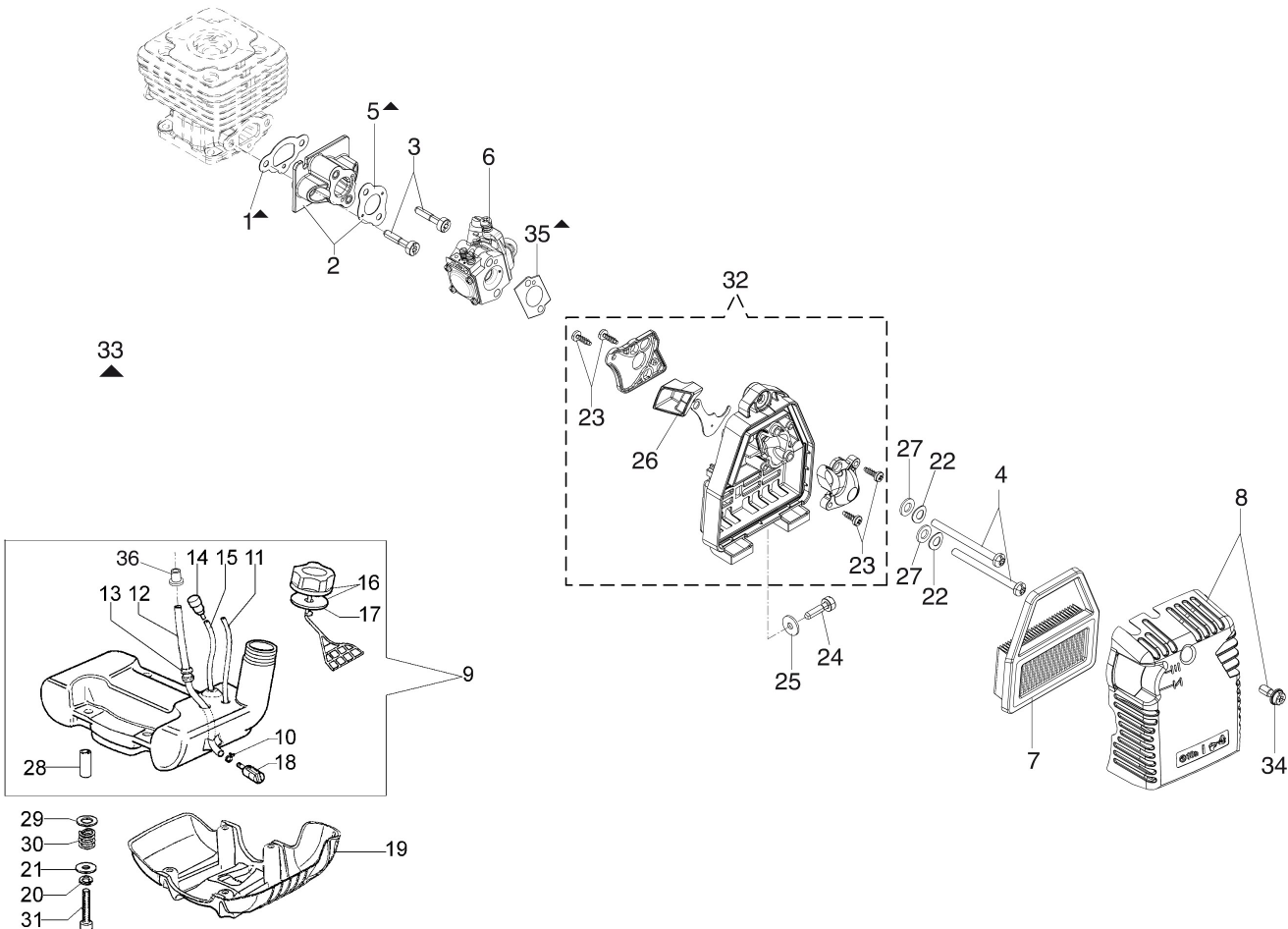


Illustration Tank and air filter

| Ref.Nu | Qty | Part number | Description | Validity from | Validity till | Notes | Bulletin |
|--------|-----|-------------|--------------------------------|----------------|----------------|-------|---------------|
| 1 | 1 | 61200019AR | Gasket | | | | |
| 2 | 1 | 61200198 | Insulator | | | | |
| 3 | 2 | 3801015R | Screw | | | | |
| 4 | 2 | 3891067R | Screw | | | | |
| 5 | 1 | 61200196AR | Gasket | | | | |
| 6 | 1 | 2318987BR | Carburetor WT-1099 | | | | EI02-02_22 |
| 7 | 1 | 61380013AR | Air filter | | | | |
| 8 | 1 | 61330131 | Filter cover kit | | S/N 8609409211 | | BT3-142-04/20 |
| 8 | 1 | 61330249 | Filter cover kit | S/N 8609409212 | | | BT3-142-04/20 |
| 9 | 1 | 61330135AR | Complete tank | | | | |
| 10 | 1 | 4098377R | Band | | | | |
| 11 | 1 | 61250228R | Tube | | | | |
| 12 | 1 | 3073014AR | Tube | | | | |
| 13 | 1 | 4161211R | Bush | | | | |
| 14 | 1 | 61400367R | Breather valve | | | | |
| 15 | 1 | 61250228R | Tube | | | | |
| 16 | 1 | 61372003R | Tank cap | | | | |
| 17 | 1 | 61070006R | Gasket | | | | |
| 18 | 1 | 61400322R | Fuel filter | | | | |
| 19 | 1 | 61200238AR | Guard | | | | |
| 20 | 4 | 3819006R | Washer | | | | |
| 21 | 4 | 3918005R | Washer | | | | |
| 22 | 2 | 3833073R | Washer | | | | |
| 23 | 4 | 3960087AR | Screw | | | | |
| 24 | 1 | 3891048R | Screw | | | | |
| 25 | 1 | 3918005R | Washer | | | | |
| 26 | 1 | 61380074AR | Starter lever | | | | |
| 27 | 2 | 3916005R | Washer | | | | |
| 28 | 4 | 61200128R | Spacer | | | | |
| 29 | 4 | 3916008R | Washer | | | | |
| 30 | 4 | 61200129R | Spring | | | | |
| 31 | 4 | 3801016R | Screw | | | | |
| 32 | 1 | 61332050R | Air filter support set | S/N 8609409212 | | | BT3-142-04/20 |
| 32 | 1 | - | Not available for this product | | S/N 8609409211 | | BT3-142-04/20 |
| 33 | 1 | 61202038BR | Gasket set | | | | |
| 34 | 1 | 61330040AR | Screw | | | | |
| 35 | 1 | 61350155R | Flange | | | | |
| 36 | 1 | 61280105 | Band | | | | |

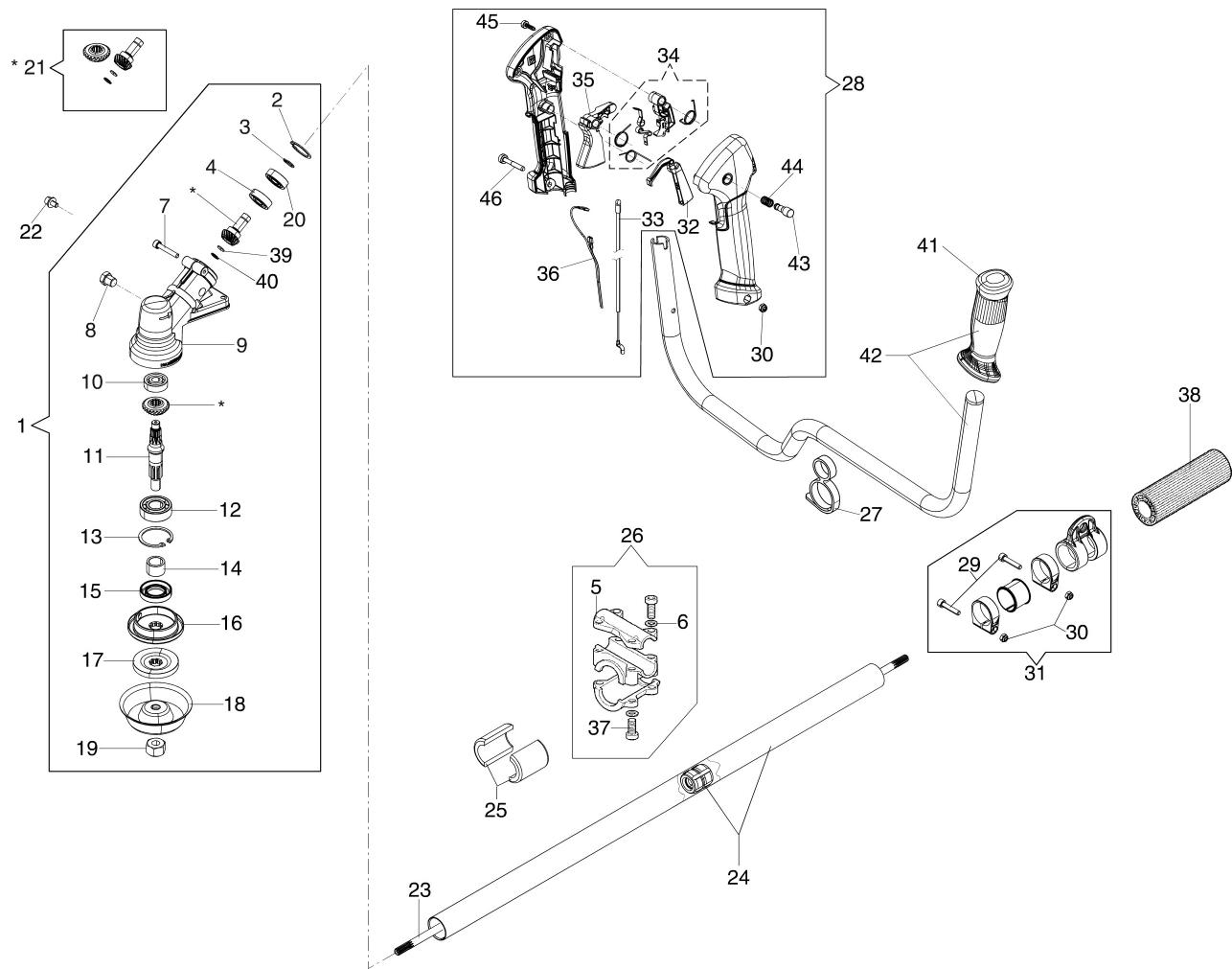


Illustration Transmission

| Ref.Nu | Qty | Part number | Description | Validity from | Validity till | Notes | Bulletin |
|--------|-----|-------------|-----------------|---------------|---------------|-------|----------|
| 1 | 1 | 61250287A | Bevel gear Ø28 | | | | |
| 2 | 1 | 3025019R | Ring | | | | |
| 3 | 1 | 3024012R | Snap ring | | | | |
| 4 | 1 | 3034019R | Bearing | | | | |
| 5 | 1 | 072700264CR | Clamp | | | | |
| 6 | 8 | 3819006R | Washer | | | | |
| 7 | 1 | 3901016 | Screw | | | | |
| 8 | 1 | 61040071R | Cap | | | | |
| 9 | 1 | 61040144R | Gear case | | | | |
| 10 | 1 | 3024018R | Ring | | | | |
| 11 | 1 | 61250054R | Pin | | | | |
| 12 | 1 | 3024012R | Snap ring | | | | |
| 13 | 1 | 3025022R | Seeger | | | | |
| 14 | 1 | 61040066R | Spacer | | | | |
| 15 | 1 | 3050018R | Seal ring | | | | |
| 16 | 1 | 61040145R | Hub | | | | |
| 17 | 1 | 4179089R | Flange | | | | |
| 18 | 1 | 61110074AR | Guard | | | | |
| 19 | 1 | 61110075R | Nut | | | | |
| 20 | 1 | 3035023R | Bearing | | | | |
| 21 | 1 | 61040133A | Bevel gear set | | | | |
| 22 | 1 | 3901008R | Screw | | | | |
| 23 | 1 | 61202109R | Shaft | | | | |
| 24 | 1 | 61252049R | Tube Ø28 | | | | |
| 25 | 1 | 074000035R | AV-mount | | | | |
| 26 | 1 | 074000183AR | Clamp | | | | |
| 27 | 1 | 61170132R | Grommet | | | | |
| 28 | 1 | 61332021R | Complete handle | | | | |
| 29 | 2 | 3801015R | Screw | | | | |
| 30 | 1 | 3914003R | Nut | | | | |
| 31 | 1 | 4179194AR | Band Ø28 | | | | |
| 32 | 1 | 61370114R | Lever | | | | |
| 33 | 1 | 61380066R | Throttle cable | | | | |
| 34 | 1 | 61370294 | Lever group | | | | |
| 35 | 1 | 61380064R | Throttle lever | | | | |
| 36 | 1 | 61330130R | Cable | | | | |
| 37 | 4 | 3801011R | Screw | | | | |
| 38 | 1 | 4179094AR | Knob | | | | |
| 39 | 1 | 4138311A | Ring | | | | |
| 40 | 1 | 3025009 | Ring | | | | |
| 41 | 1 | 61040140R | Knob | | | | |

Illustration Transmission

| Ref.Nu | Qty | Part number | Description | Validity from | Validity till | Notes | Bulletin |
|--------|-----|-------------|-------------|---------------|---------------|-------|----------|
| 42 | 1 | 61330199 | Handle kit | | | | |
| 43 | 1 | 56550185R | Button | | | | |
| 44 | 1 | 4100098BR | Spring | | | | |
| 46 | 1 | 3891054R | Screw | | | | |
| 47 | 5 | 3893016AR | Screw | | | | |

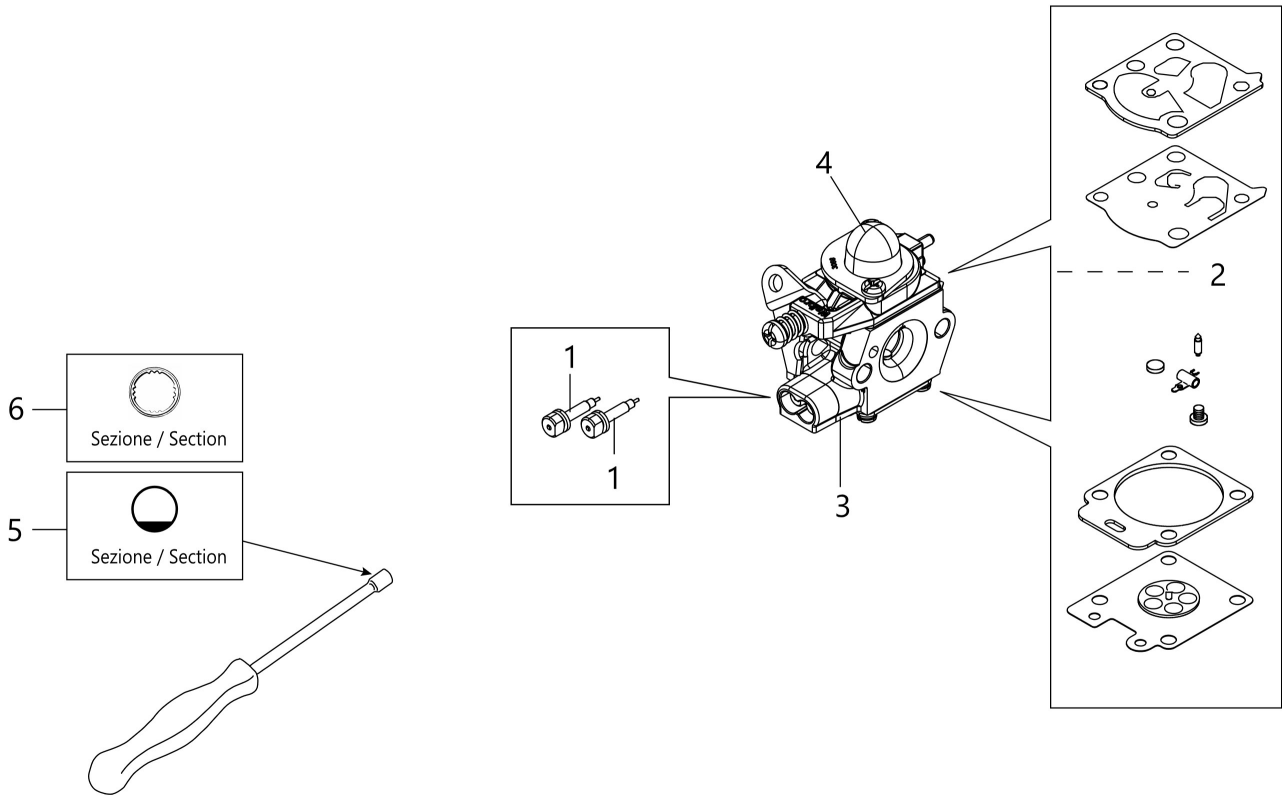


Illustration Carburettor WT-1099

| Ref.Nu | Qty | Part number | Description | Validity from | Validity till | Notes | Bulletin |
|--------|-----|-------------|------------------------------------|---------------|---------------|-------|------------|
| 1 | 2 | 2318667R | Adjust. screw | | | | |
| 2 | 1 | 2318671 | Repair kit | | | | |
| 3 | 1 | 2318987BR | Carburetor WT-1099 | | | | EI02-02_22 |
| 4 | 1 | 2318572 | Primer pump | | | | |
| 5 | 1 | 3052036R | Special screwdriver "D-style" type | | | | |
| 6 | 1 | 2304001R | Special screwdriver KNURL-STYLE | | | | EI02-02_22 |

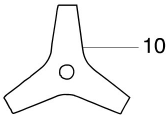
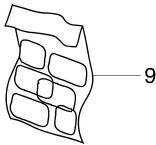
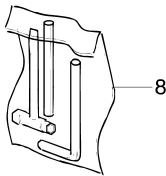
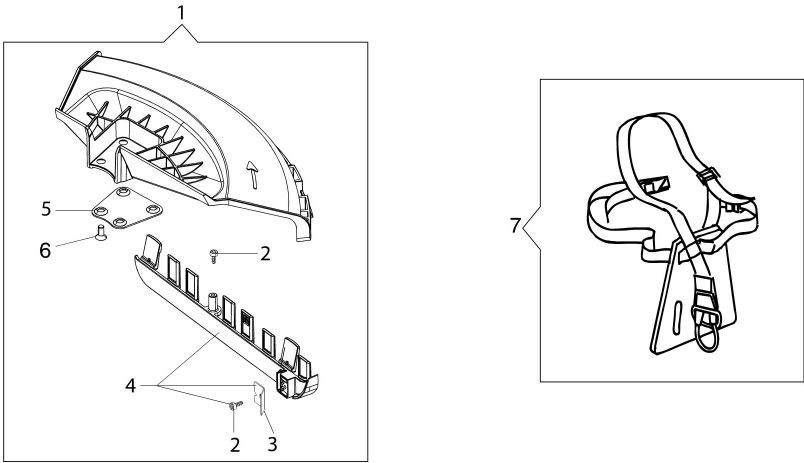


Illustration Accessories

| Ref.Nu | Qty | Part number | Description | Validity from | Validity till | Notes | Bulletin |
|--------|-----|-------------|---------------|---------------|---------------|-------|----------|
| 1 | 1 | 61330235 | Guard kit | | | | |
| 2 | 2 | 3960032R | Screw | | | | |
| 3 | 1 | 4174275R | Blade | | | | |
| 4 | 1 | 61330252 | Skirt w/blade | | | | |
| 5 | 1 | 4174278R | Plate | | | | |
| 6 | 4 | 3802004DR | Screw | | | | |
| 7 | 1 | 61200106R | Harness | | | | |
| 8 | 1 | 61012010R | Tool kit | | | | |
| 9 | 1 | 61330202 | Labels kit | | | | |
| 10 | 1 | 4095673BR | 3-tooth blade | | | | |

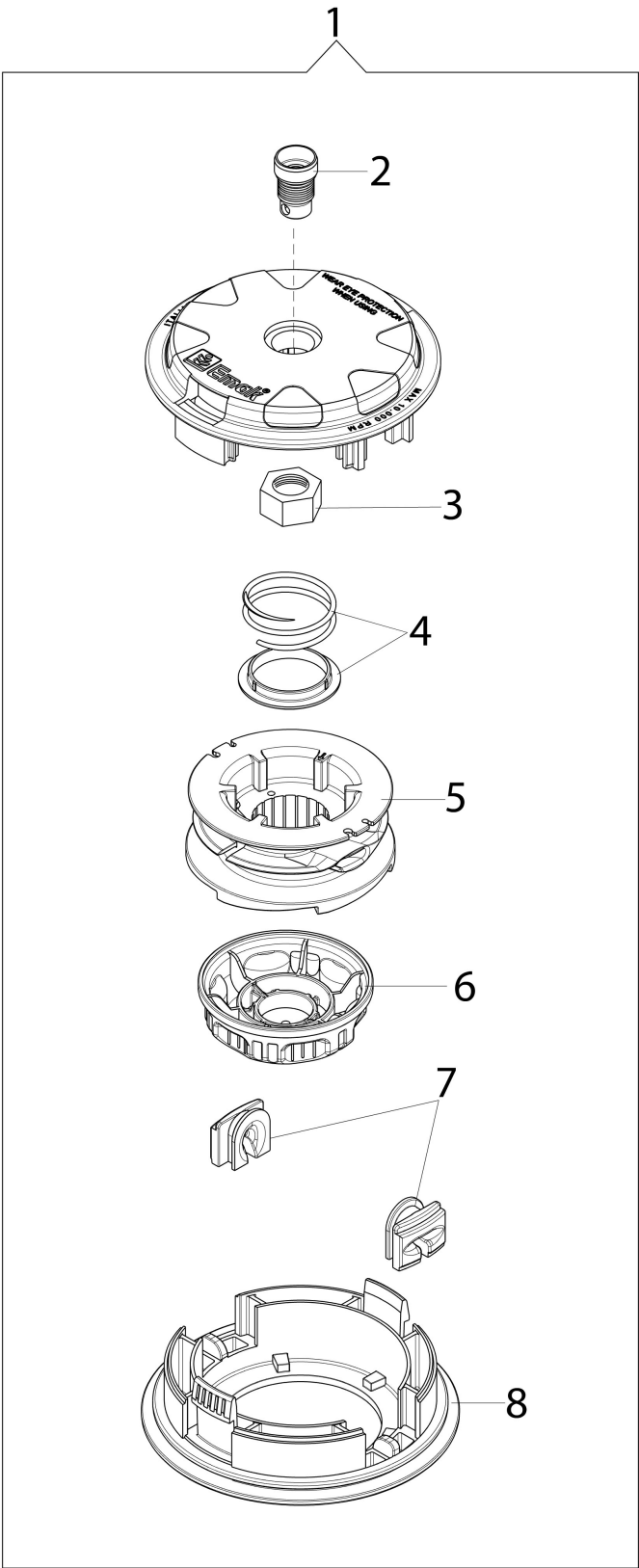


Illustration Illustrated part list (Head "Load & Go" D.130)

| Ref.Nu | Qty | Part number | Description | Validity from | Validity till | Notes | Bulletin |
|--------|-----|-------------|----------------------|---------------|---------------|---------------|----------|
| 1 | 1 | 63129007 | Load & Go nylon head | | | Easy&LongLife | |
| 1 | 1 | 63129014 | Head Load&Go | | | ExtraLife | |
| 2 | 1 | 63120041R | Insert | | | | |
| 3 | 1 | 63120040R | Nut | | | | |
| 4 | 1 | 63120031R | Kit spring | | | | |
| 5 | 1 | 63120020AR | Nylon spool | | | | |
| 6 | 1 | 63120007AR | Knob | | | Easy&LongLife | |
| 6 | 1 | 63120030AR | Knob | | | ExtraLife | |
| 7 | 2 | 63120001R | Bushing | | | | |
| 8 | 1 | 63120005R | Cover | | | | |